

# MINTHIS

*The Investment  
Proposal*

*The Property  
Collection*

*The Resort*

*Effortless luxury living*



*An eden of discovery*



*Recharge and reconnect*



*Beautiful moments*





# RESORT PHILOSOPHY



**MINTHIS IS ABOUT ENRICHMENT**

*The timeless spirit of the landscape offers true escapism, where time is a treasure to be spent recharging and reconnecting.*



# LIFE AT MINTHIS



**WORLD-CLASS AMENITIES**

*Atmospheric settings for exceptional experiences,  
there is an unparalleled fullness of life at Minthis.*



## THE CLUBHOUSE



A welcoming social hub that blends visionary design with exceptional menus in a relaxed setting, with informal but impeccable service.



## DINING



Refined yet relaxed, the dining experiences at the Clubhouse combine world-class food and drink in an atmospheric and incomparably beautiful setting.



# THE PLATEIA



# THE LOUNGE & BAR

▪





WELLNESS





# RECONNECT AND REJUVENATE



**PHYSICAL WELLBEING AND SPIRITUAL BALANCE**

*Every moment at Minthis is part of  
a unique holistic journey.*



Under construction  
Completion 2020

## WELLNESS SPA



The groundbreaking Wellness Spa is designed to maintain a strong connection with nature. Facilities include studios centered on wet and dry therapies, yoga, hydrotherapy, sauna, 25m indoor heated pool, scented baths, private reflection courtyards and a gym with yoga deck—all within the 2000sqm low-lying Pavilions.



ADVENTURE  
AND DISCOVERY





# CHAMPIONSHIP GOLF

▪  
A COURSE FOR ALL SEASONS

*A beautiful and demanding par 71 golf course which winds its way past a 12<sup>th</sup>-century monastery with breathtaking mountain views.*



# ADVENTURE PATHWAYS

▪  
MEMORABLE EXPERIENCES

*Surrounded by miles of countryside, the opportunities for adventure at Minthis are endless.*



# A SENSE OF PLACE

•  
INCREDIBLE LOCATION

*Cyprus is a country blessed, rich in heritage and culture  
as it is in natural beauty.*



# CULTURE AND DISCOVERY

•  
EXPLORE PAFOS

*At Minthis you are never far away from the best that Cyprus  
and Island life has to offer*





## RICH HISTORY



## LOCAL HOSTS



	
Pafos International Airport	20 minutes
Larnaca International Airport	90 minutes
Limassol	40 minutes
International School	10 minutes
Hospitals and private clinics	10 minutes
Shops	5 minutes
	
Paris	3.30 hours
Dubai	3.40 hours
Moscow	4.15 hours
London	4.30 hours



# PROPERTY COLLECTION

*The Investment  
Proposal*

*The Property  
Collection*

*The Resort*



# DESIGN PRINCIPLES



**OPENNESS, LIGHT AND AIR**

*“The architecture has the power from a humanistic point of view to regenerate you visually and sensorially”.*

Nik Karalis, CEO Woods Bagot



# LIMITLESS PANORAMAS





# SUPER NATURE

▪



# PROPERTY COLLECTION



**FIRST IMPRESSIONS ARE EVERYTHING**

*One-of-a-kind, contemporary homes embracing luxury living.*



## NATURAL MATERIALS

▪



## COURTYARD LIVING

▪



## FRAMED VIEWS

■



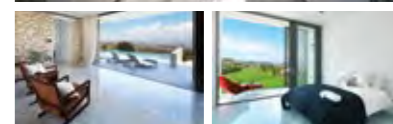


# LUXURIOUS INTERIORS

YOUR HOME, YOUR SANCTUARY

*"There is a unique balance of personal intimacy and openness  
in the homes that comes from the light".*

Demetris Ashiotis, Executive Director Pafllia



# INVESTMENT PROPOSAL

*The Investment  
Proposal*

*The Property  
Collection*

*The Resort*

- 1. Clubhouse 

---

- 2. Wellness Spa 


---

- 3. The Plateia 


---

- 4. Golf Course 

---

- 5. Driving Range 

---

- 6. Kids Club 

---

- 7. Outdoor Sports Park 

---

- 8. Sports Ground 

---

- 9. Equestrian Centre 


---

- 10. Monastery 

---

- 11. Vineyards 

---

- 12. Playgrounds 

---

- 13. Star gazing 


---

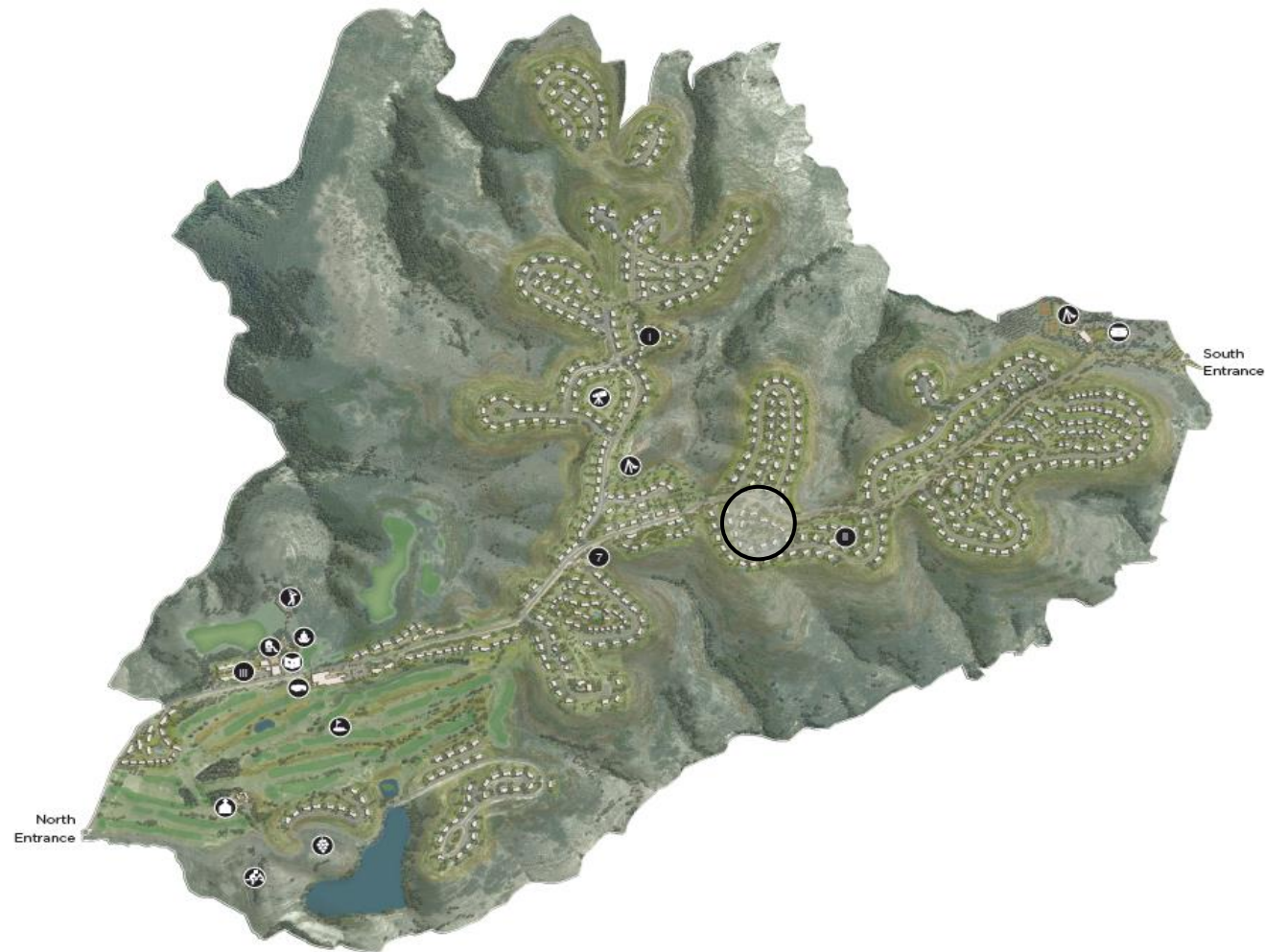
- The Plateau 

---

- The Ridge 

---

- The Suites 



## LOCATION OF PLOT ON RESORT MAP



Delivery - 18 months from  
the signing date

## PLOT DETAILS



### RIDGE GREEN VILLA 5

Plot Size (m<sup>2</sup>)

617.00

Orientation

East

Views

Mountain Views

Neighborhood Views



## VILLA DETAILS



### RIDGE GREEN HESPERIDES+ VILLA 5

Price: €1.320.000 plus VAT

Above price includes full furniture fittings and smart home lights.

3 Bedrooms

#### Covered areas (m<sup>2</sup>)

Covered internal area	142.00
Covered verandas	23.00
<b>Total covered area</b>	<b>165.00</b>
Uncovered veranda	95.00

Bathroom 3

En-suites 3

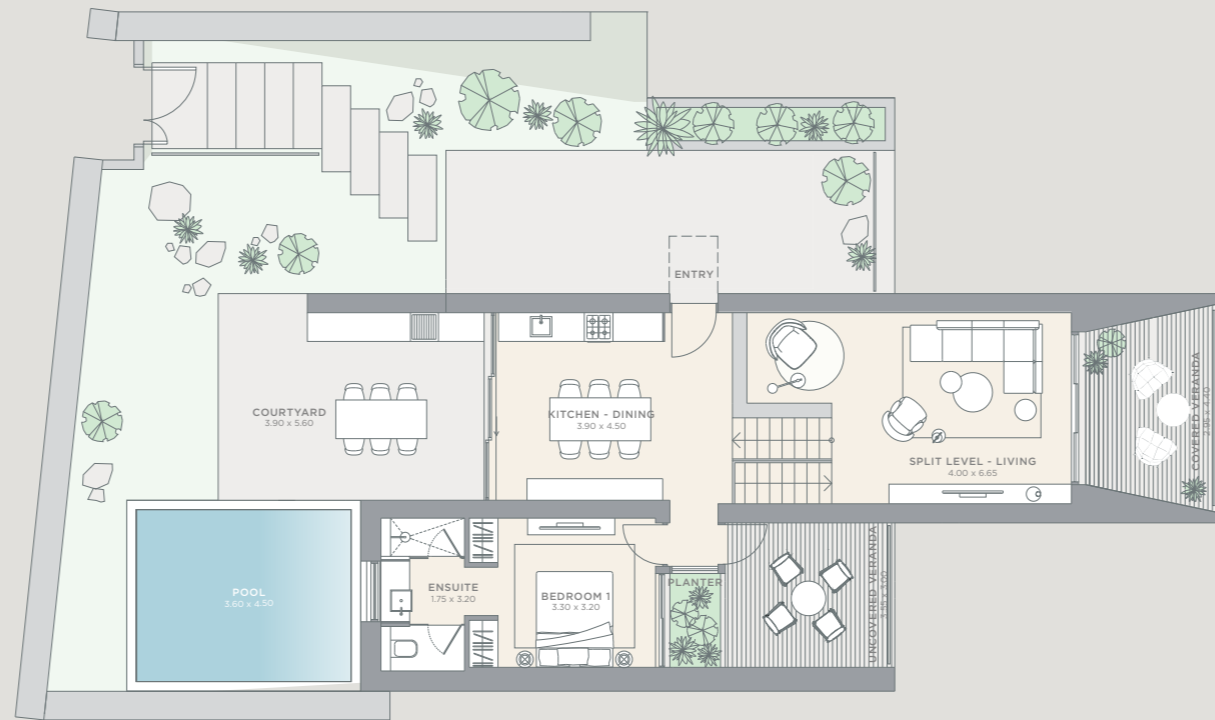
**Private pool** Yes

# HESPERIDES

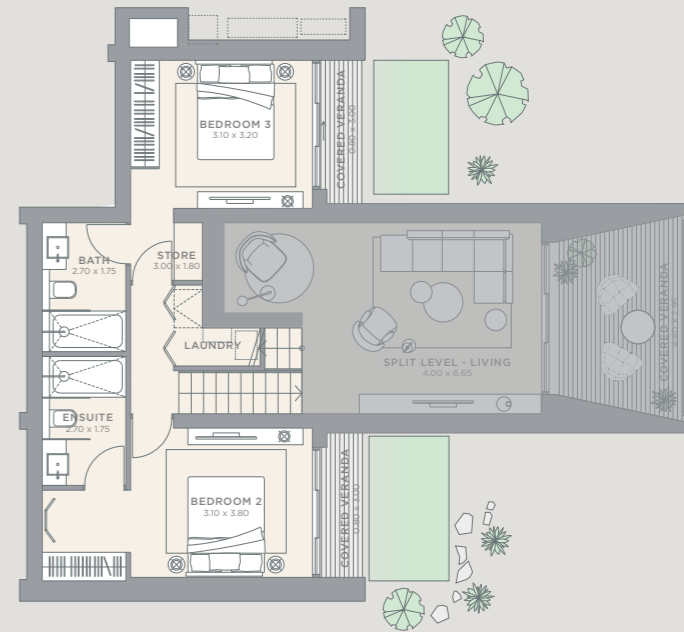


# HESPERIDES

FLOOR PLAN



Entry Level



Lower Level













This offer is subject to the following terms and conditions.

Valid for a period of 14 (fourteen) days from the present date. After the expiration of the Term, Pafilia retains the right to amend the prices included in the offer at any point without notice. This offer is subject to availability and payment of a reservation deposit to be agreed with the Vendors. Pafilia retains the right at all times, to withdraw the offer in the event where a third party reserves the relevant property with a down payment. Pafilia Group shall not be held responsible for any loss, damage or inconvenience caused as a result of the withdrawal of the offer as herein above provided.

# MINTHIS

INVESTMENT PROPOSAL